

## Installing Magic Paathshala

### What is Magic Paathshala

Magic Paathshala is a FREEWARE application developed by Datacomp to view various training content produced by Datacomp Training Academy (DTA). The training content may be in the form of simple powerpoint presentations, Audio / Video embedded presentations, Event / Workshop Videos and so on.

The content is provided by DTA on a CD known as PAATHSHALA CONTENT CD. This CD must be installed in Magic Paathshala application in order to view it.

### System Requirements

In order to run the Magic Paathshala and its content smoothly, your PC must have the following **minimum** configuration

- 256MB RAM
- Sufficient free space on the hard disk
- Microsoft Windows 2000, XP or Vista
- Multimedia capability (for sound & video)
- MS Office 2000, Windows Media Player

### Installing Magic Paathshala

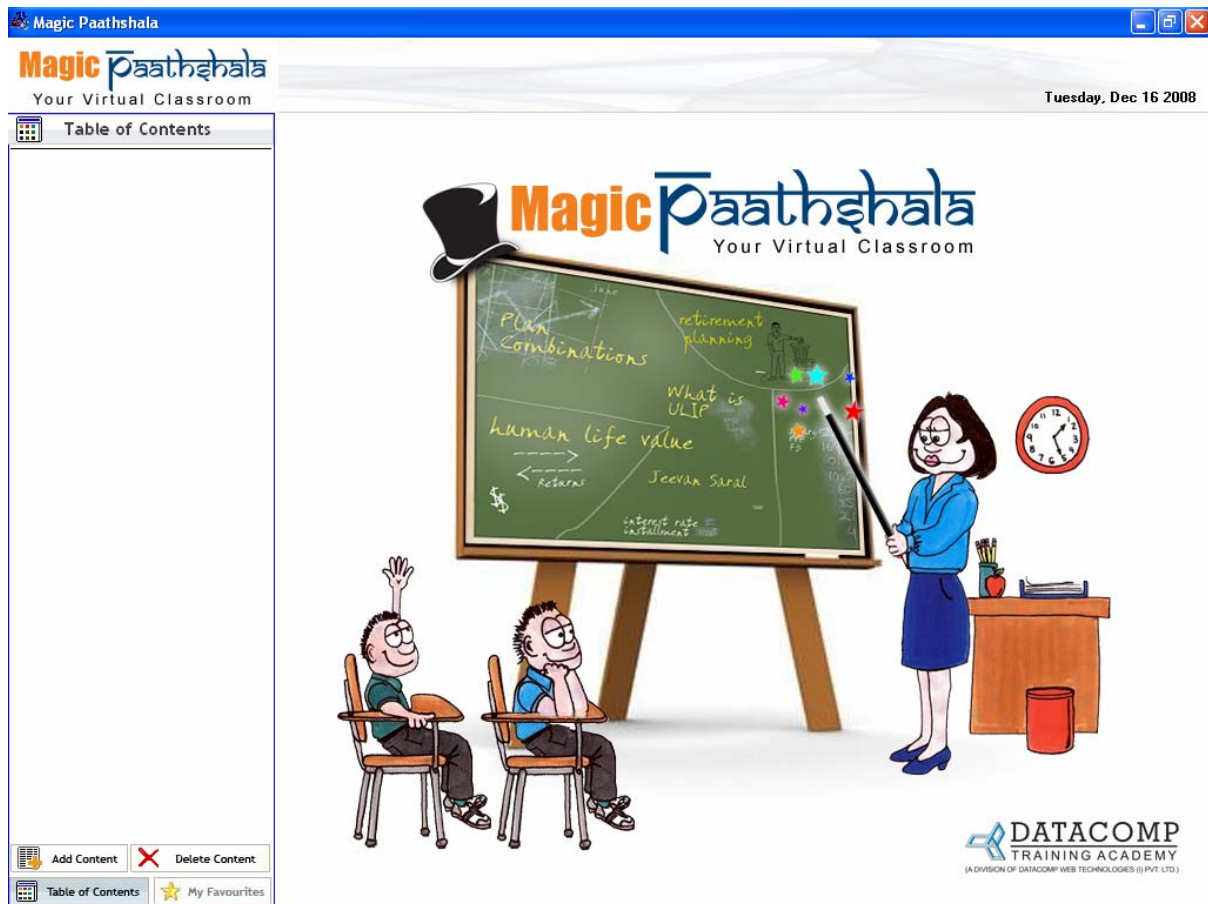
Skip this section if you have already installed Magic Paathshala Application.

- Insert the CD in the CD-ROM drive
- In the folder MAGICPAATHSHALA double click on the file MPSETUP to start the installation wizard of Magic Paathshala
- Follow the simple instructions on the screen to complete the installation process
- We recommend that you install the Paathshala application in the drive which has more free hard disk space.

## Using Magic Paathshala

### Starting Magic Paathshala

- From the START → PROGRAMS → DATACOMP TRAINING ACADEMY folder select MAGIC PAATHSHALA
- This will start the Magic Paathshala application. If you are running the application for the first time then the following screen appears:

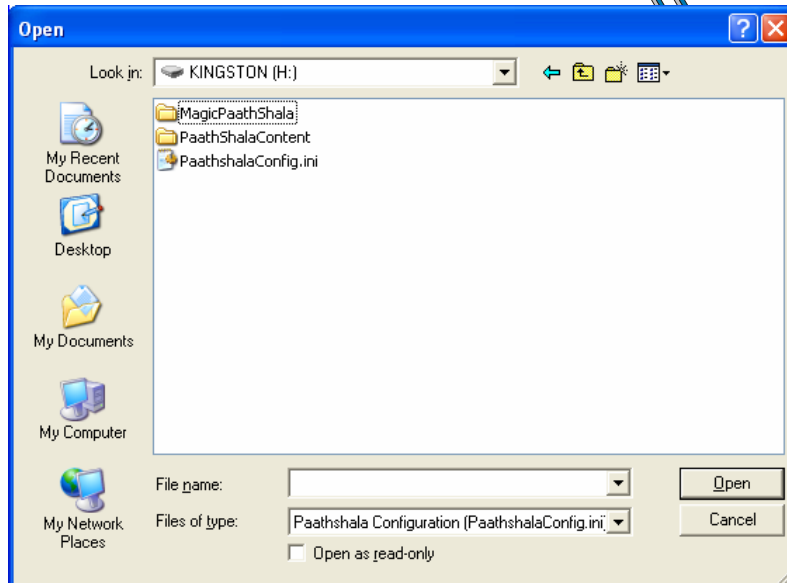


- Please note that initially the TABLE OF CONTENTS section is blank as no content has been loaded. This list will show items when you add content to the Magic Paathshala application.

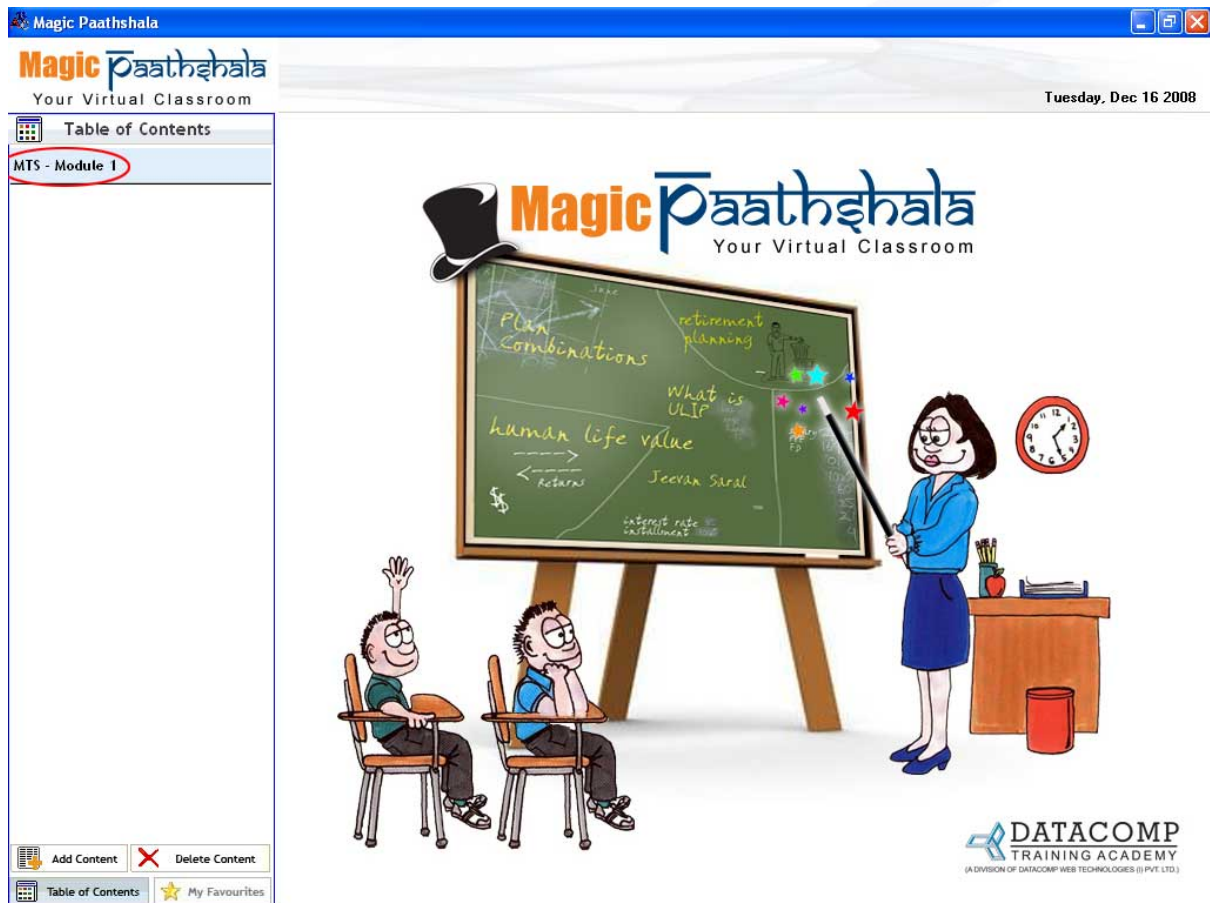
### Adding New Content

The content for Magic Paathshala is provided on the CD. In order to view the content, it must be added to the Magic Paathshala Application. Please follow the procedure below to add new content to the Paathshala application:

- Insert the Paathshala Content CD (for e.g. MTS - Module 1) in the CD-Drive
- Click on the ADD CONTENT button located on the bottom left corner of the screen.
- The following screen will appear



- ❑ Select PAATHSHALACONFIG.INI and click on the OPEN button.
- ❑ In a few moments the contents from this CD will be installed in the CONTENT folder of Paathshala application. Your TABLE OF CONTENTS will get updated appropriately:

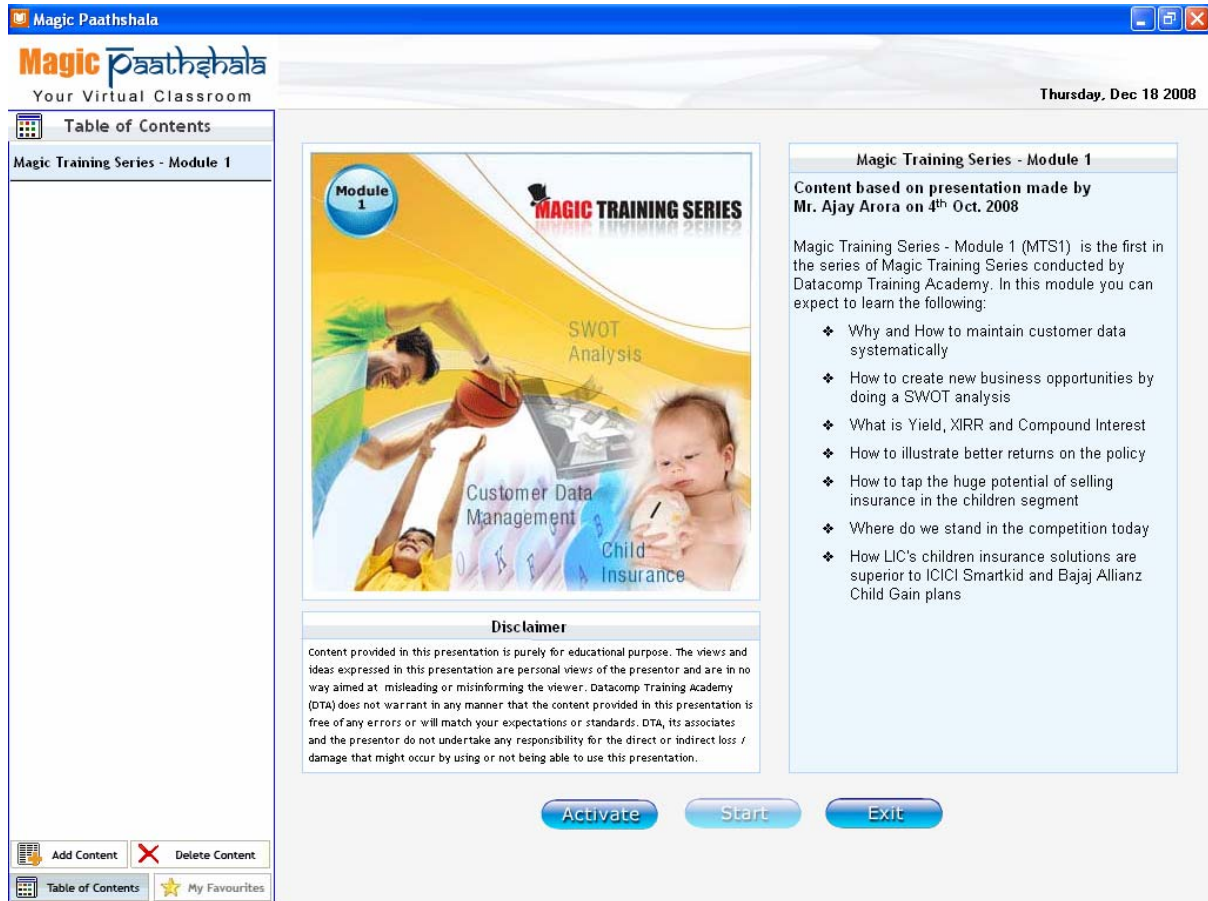


- ❑ Now to run this content you don't need to insert the CD everytime. The content is installed on your hard disk. You may now remove the CD and store it safely.

## Activating the Content

Now that the content is successfully installed, it must be activated to become usable.

Activating the content is a very simple process. Click on the Content Title (e.g. MTS - Module 1) from the TABLE OF CONTENTS. This will open the content and the screen will appear as below:



The screenshot shows a web browser window titled "Magic Paathshala". The page header includes the logo "Magic Paathshala Your Virtual Classroom" and the date "Thursday, Dec 18 2008". On the left, a "Table of Contents" sidebar lists "Magic Training Series - Module 1". The main content area features a banner for "Module 1" with the title "MAGIC TRAINING SERIES" and a collage of images including a person with a basketball, a child, and text like "SWOT Analysis", "Customer Data Management", and "Child Insurance". Below the banner is a "Disclaimer" section. To the right, a box titled "Magic Training Series - Module 1" contains the text: "Content based on presentation made by Mr. Ajay Arora on 4<sup>th</sup> Oct. 2008" and a list of topics to be covered. At the bottom of the main content area are three buttons: "Activate", "Start", and "Exit". A toolbar at the bottom left includes "Add Content", "Delete Content", "Table of Contents", and "My Favourites".

□ Click on the **ACTIVATE** button to open the following form:

**Activation for content : MTS - Module 1**

<table border="0"> <tr><td><b>Pin Number</b></td><td><input type="text"/></td></tr> <tr><td><b>Customer Name</b></td><td><input type="text"/></td></tr> <tr><td><b>Serial Code</b></td><td><input type="text" value="00131216"/></td></tr> <tr><td><b>Content Code</b></td><td><input type="text" value="MTS1"/></td></tr> </table>	<b>Pin Number</b>	<input type="text"/>	<b>Customer Name</b>	<input type="text"/>	<b>Serial Code</b>	<input type="text" value="00131216"/>	<b>Content Code</b>	<input type="text" value="MTS1"/>	<table border="0"> <tr><td colspan="2" style="text-align: center;"><b>Contact Information</b></td></tr> <tr><td><b>Mobile No</b></td><td><input type="text"/></td></tr> <tr><td><b>Telephone No</b></td><td><input type="text"/></td></tr> <tr><td><b>Fax No</b></td><td><input type="text"/></td></tr> </table>	<b>Contact Information</b>		<b>Mobile No</b>	<input type="text"/>	<b>Telephone No</b>	<input type="text"/>	<b>Fax No</b>	<input type="text"/>
<b>Pin Number</b>	<input type="text"/>																
<b>Customer Name</b>	<input type="text"/>																
<b>Serial Code</b>	<input type="text" value="00131216"/>																
<b>Content Code</b>	<input type="text" value="MTS1"/>																
<b>Contact Information</b>																	
<b>Mobile No</b>	<input type="text"/>																
<b>Telephone No</b>	<input type="text"/>																
<b>Fax No</b>	<input type="text"/>																

*Fields labelled in RED are mandatory*

<table border="0"> <tr><td colspan="2" style="text-align: center;"><b>Address Information</b></td></tr> <tr><td><b>Address</b></td><td><input type="text"/></td></tr> <tr><td><b>City</b></td><td><input type="text"/></td></tr> <tr><td><b>State</b></td><td><input type="text"/></td></tr> <tr><td><b>Email Address</b></td><td><input type="text"/></td></tr> </table>	<b>Address Information</b>		<b>Address</b>	<input type="text"/>	<b>City</b>	<input type="text"/>	<b>State</b>	<input type="text"/>	<b>Email Address</b>	<input type="text"/>	<table border="0"> <tr><td><b>Pin Code</b></td><td><input type="text"/></td></tr> <tr><td><b>Activation Code</b></td><td><input type="text"/></td></tr> </table>	<b>Pin Code</b>	<input type="text"/>	<b>Activation Code</b>	<input type="text"/>
<b>Address Information</b>															
<b>Address</b>	<input type="text"/>														
<b>City</b>	<input type="text"/>														
<b>State</b>	<input type="text"/>														
<b>Email Address</b>	<input type="text"/>														
<b>Pin Code</b>	<input type="text"/>														
<b>Activation Code</b>	<input type="text"/>														

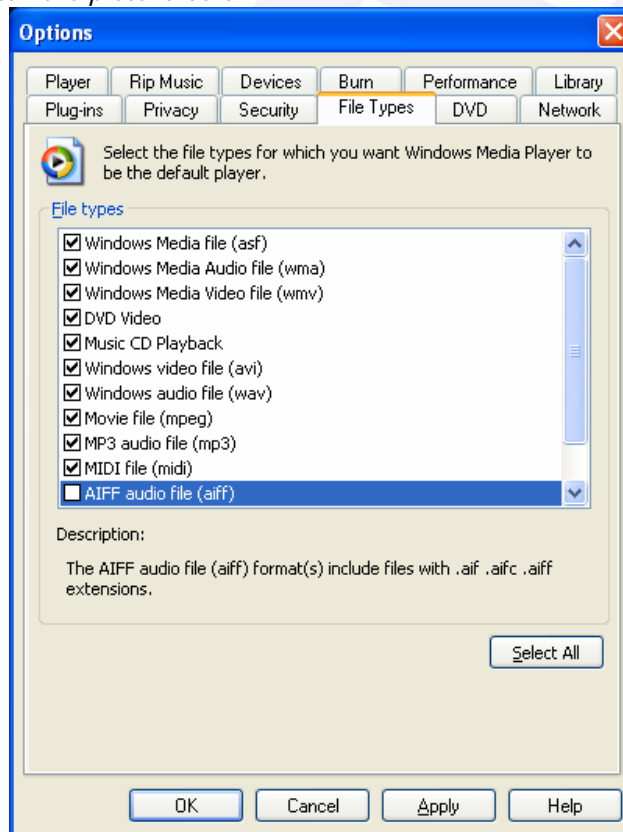
- ❑ Fill this form appropriately. Pin Number is printed on the CD-Jacket under the scratch ink. Scratch the silver patch to reveal the PIN NUMBER
- ❑ Click on the SUBMIT button to submit your Activation request to Datacomp server. Ensure that your internet connection is on at this time. In a few seconds the ACTIVATE CODE text box will get filled automatically. Click on the icon to Activate the content and close this form

## Playing the Content

- ❑ Open the content by selecting it from the TABLE OF CONTENTS
- ❑ Click on the START button to play the presentation. Ensure that your speakers are connected to enjoy the audio / video that may be embedded in the presentation

## Trouble Shooting

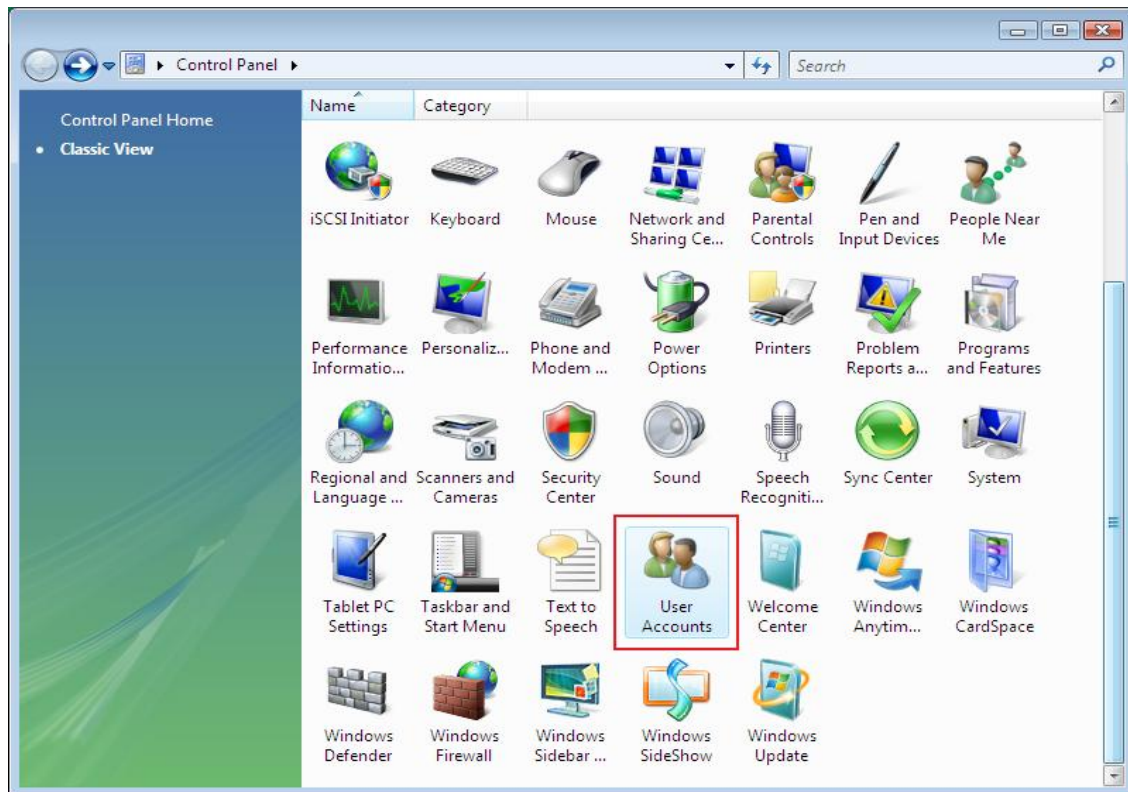
- a. The sound is not playing in my presentation  
*Please check your audio settings of your PC. Maybe the volume control has been MUTED. Try playing any MP3 song. If it plays then even the sound in the presentation will play*
- b. I cannot see the Video included in the presentation  
*Is Windows Media Player able to play the Video files ? Is Windows Media Player your default application for viewing videos? If not then make Windows Media Player the default player for Audio and Video files*
- c. How to make Windows Media Player a default player  
*Start Windows Media Player. From TOOLS menu select OPTIONS and ensure that your settings match the picture below:*



## IMPORTANT NOTE for Microsoft Vista Users

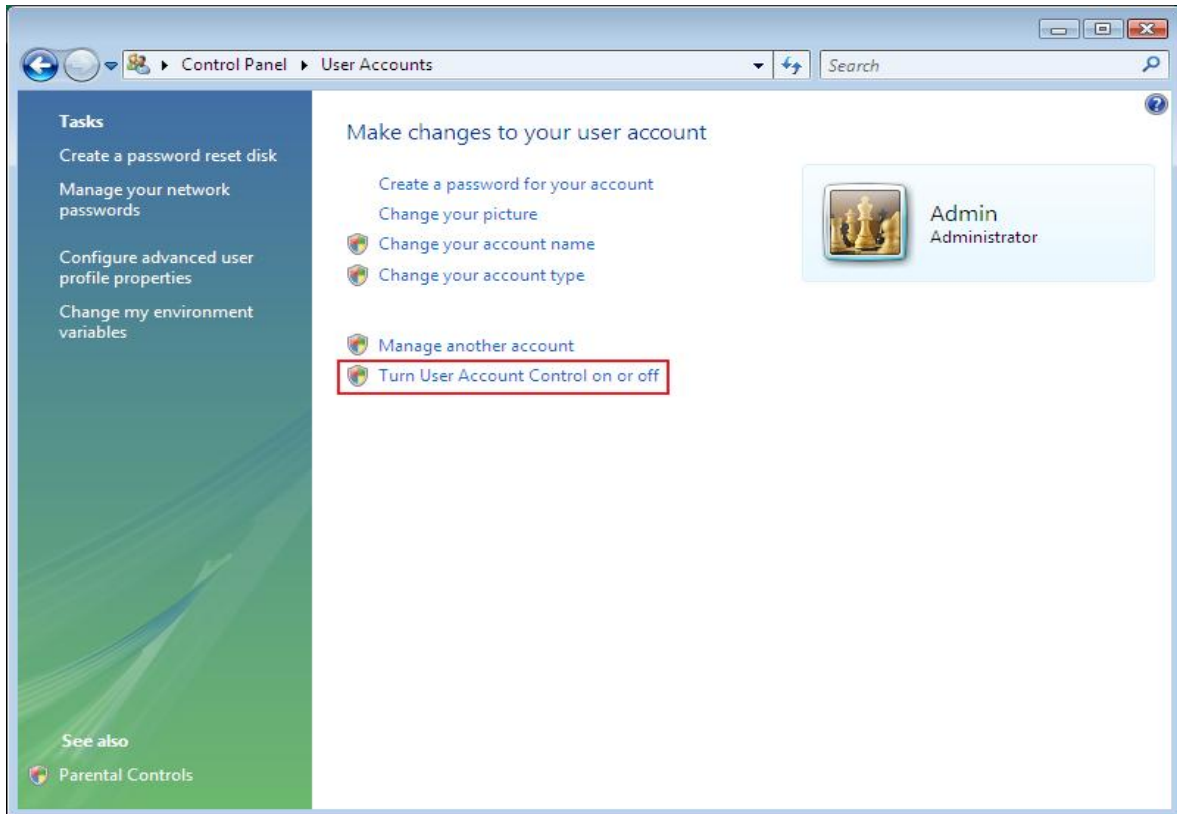
Before Installing the Magic Paathshala application (MPSetup.exe) kindly check your system settings as per instructions given below:

- Go to Control Panel & click on "User Accounts"

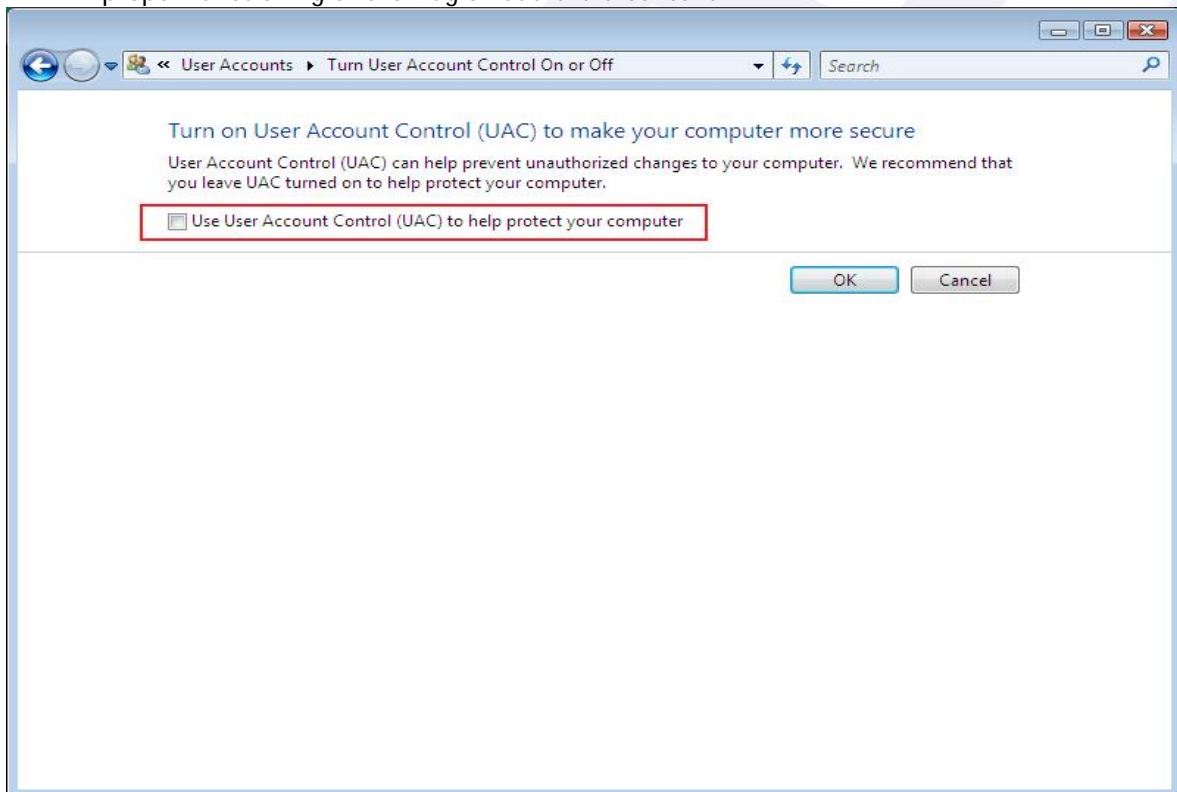


(continued on next page)

- Select “Turn User Account Control on or off”



- If the checkbox “User User Account Control (UAC) to help protect your computer” is checked then uncheck it and click on OK button. ALWAYS KEEP THIS SETTING TO OFF for proper functioning of the Magic Paathshala content



- Restart your machine and then install Magic Paathshala (MPSetup.exe)